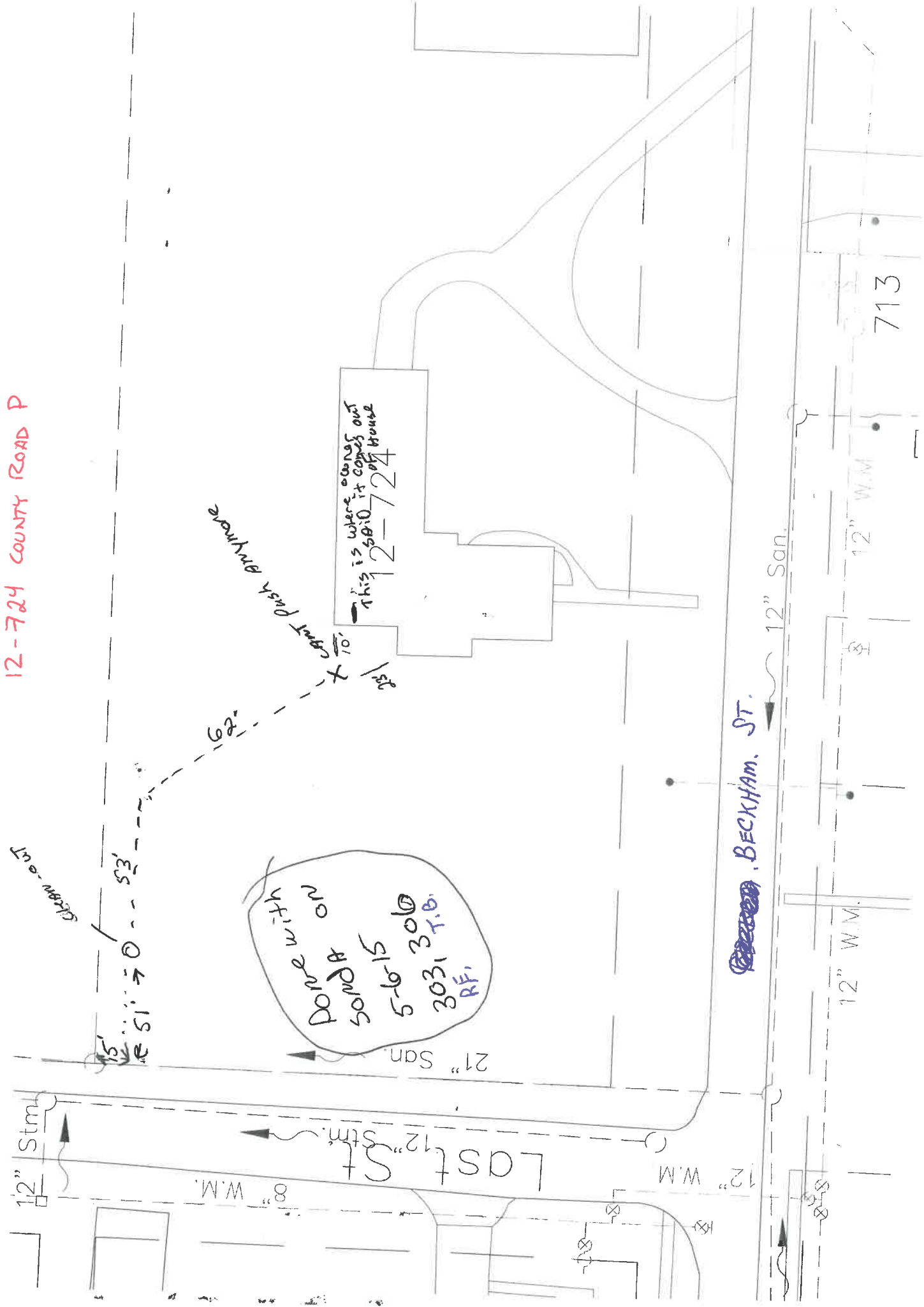


12-724 COUNTY ROAD P



15' 51' 70' 53'

15' 51' 70' 53'

8" W.M.

Last St

12" W.M.

12" San.

BECKHAM ST.

12" W.M.

12" W.M.

713

62' 23' 10'

This is where along
S010 it comes out
of house
2-724

Don't write
S010
5-6-15
3031 T.O.
RF.

21" San.